

TARGETED PREVENTION IS KEY TO ENDING HOMELESSNESS



Across California, **nearly three people become homeless for every person housed** through local homeless response systems. To make sustained progress on this pressing issue, we must **significantly reduce the numbers of people being pushed into homelessness**.

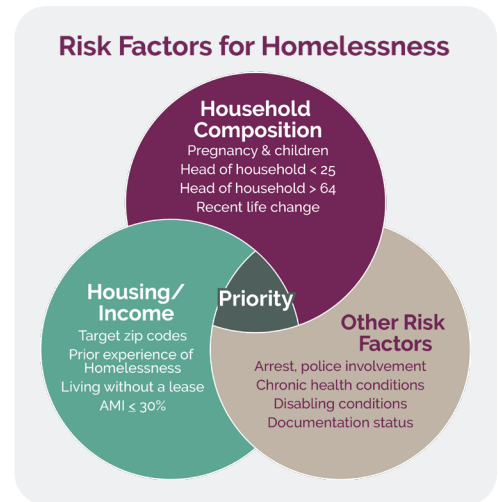


TARGETED HOMELESSNESS PREVENTION

Targeted prevention programs direct prevention resources to the households at highest risk of experiencing homelessness. These programs use an assessment tool to ask questions about evidence-based risk factors for homelessness.

High-risk applicants eligible for assistance receive a combination of emergency financial assistance; time-limited, housing-focused case management; and individualized referrals to service providers and programs to keep them housed.

Targeting distributes prevention resources more efficiently and equitably, though this does mean that not everyone who applies for financial assistance will receive it. Depending on capacity, programs can provide referrals and resources other than financial assistance for households who are not prioritized for financial assistance based on their risk profile.



HOMELESSNESS PREVENTION IS A CONTINUUM

Homelessness prevention is a continuum of programs and services that can be strategically deployed to reduce the risk of homelessness. It can be a powerful part of a larger strategy to address homelessness, **reducing the number of people who need shelter and crisis services, and using limited resources more efficiently and equitably.**





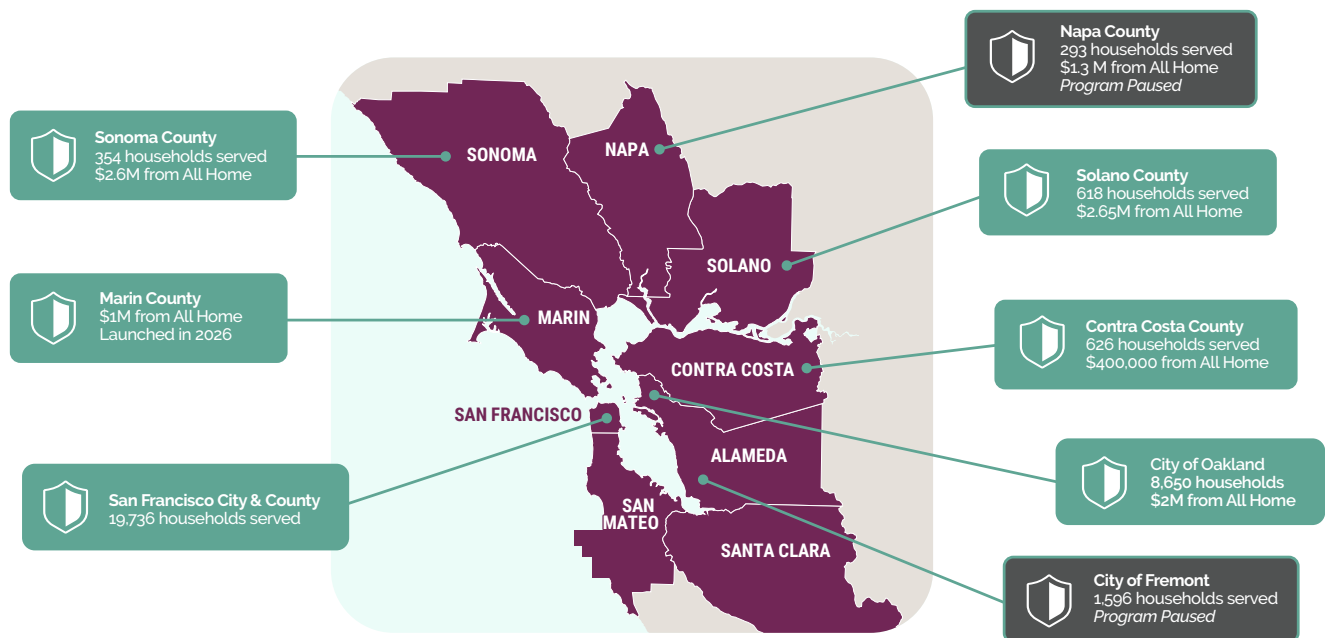
SUCCESSFUL PROGRAMS IN THE BAY AREA

To date, **All Home** has invested over **\$11 million** in homelessness prevention throughout the region, incentivizing \$35M+ in public investments across the region. With our support, approximately 25,000 households have been served through our partnerships.

To reach the households at highest risk, **All Home and Bay Area Community Services (BACS)** developed an **online technology platform that hosts a portal for each program in our regional network** (San Francisco, Solano, Sonoma, Oakland, and soon to launch in Marin County).

Each portal has a multilingual online application, an assessment tool that assigns priority scores based on risk, and a secure "back end" that can identify and offer assistance to high-scoring households, as well as track the status of applications and financial assistance provided.

Financial assistance and services are flexible and highly individualized, based on what each household needs to stay housed and build stability. All Home's program data indicates that **households need an average of about \$6,000 in direct financial assistance (plus services) to stay housed.**



WHAT IT WILL TAKE TO SCALE HOMELESSNESS PREVENTION

To solve homelessness, we need to get **aggressive about preventing it**. California should direct funding toward targeted homelessness prevention and set policy on how to assess risk and track meaningful outcomes.

Significant and ongoing investment can deliver powerful regional and state-level results, and is essential to enable our homelessness response efforts to succeed.

To establish a targeted homelessness prevention program, counties should assess the numbers of people experiencing homelessness for the first time each year, more efficiently and equitably target existing resources, ideally using an assessment tool, and coordinate their approach with other aligned

For more information, contact Irene Farnsworth, Director of Regional Homelessness Prevention at ifarnsworth@allhomeca.org.